

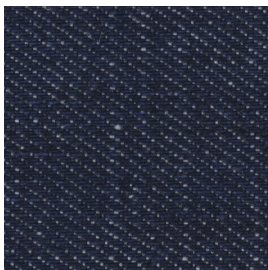
JEANS FABRICS⁺

For the Assessment of Soiling and Cleaning Behavior

All three articles are based on the same fabric, but with different dyeings. These Jeans fabrics are used in the leather-, automotive-, textile- and cleaning industry to determine soiling caused by Jeans fabrics respectively to test the cleaning behaviour of such soiling. Article 278 is also available (conform with VDA test) with a carbonblack/oliveoil soiling. (article 128)

article 277

100 % cotton



Pure indigoblue dyeing in warp* direction

- m²-weight = 315 g
- threads in warp* direction = 25.5 / cm
- threads in weft** direction = 16.5 / cm
- Type of dyeing = indigoblue

article 278

100 % cotton

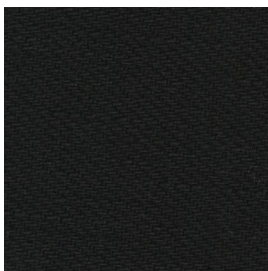


Indigoblue / sulfurblack dyeing in warp* direction

- m²-weight = 376 g
- threads in warp* direction = 25 / cm
- threads in weft** direction = 16 / cm
- Type of dyeing = indigoblue/ sulfurblack

article 279

100 % cotton



Sulfurblack dyeing in warp* and weft direction**

- m²-weight = 333 g
- threads in warp* direction = 27 / cm
- threads in weft** direction = 15 / cm
- Type of dyeing = sulfurblack

* warp direction = length direction of the fabric

** weft direction = width of the fabric